



## The London Resort Development Consent Order

BC080001

### Environmental Statement Volume 3: Figures

#### Figure 12.42 Biodiversity Net Gain Assessment – Existing Habitats

Document reference: 6.3.12.42

Revision: 00

December 2020

Planning Act 2008

The Infrastructure Planning (Applications: Prescribed Forms and Procedure) Regulations 2009

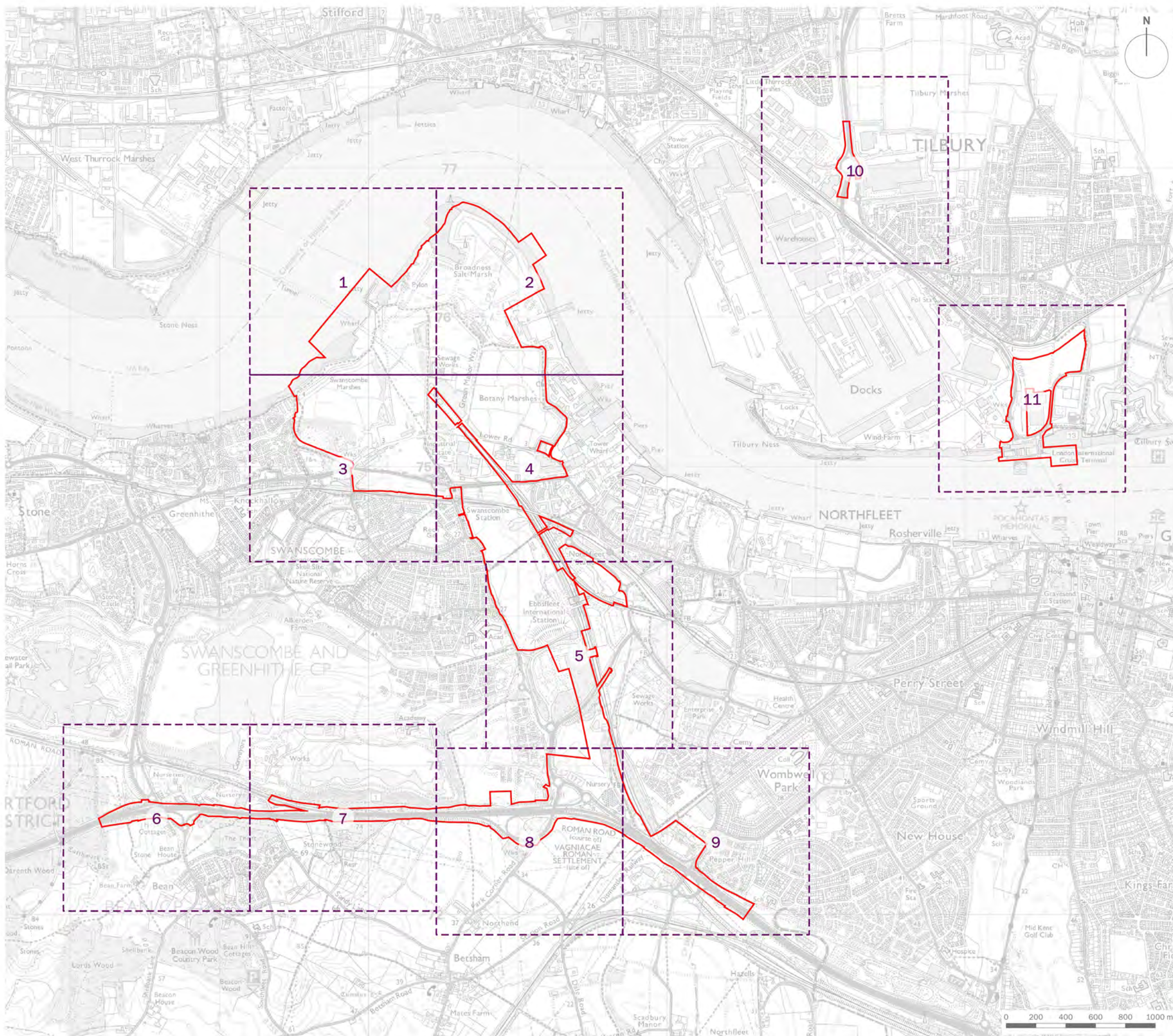
Regulation 5(2)(a)

The Infrastructure Planning (Environmental Impact Assessment) Regulations 2017

Regulation 12(1)

[This page is intentionally left blank]





 Order Limits

client  
**London Resort Company Holdings Limited**

project title  
**The London Resort**

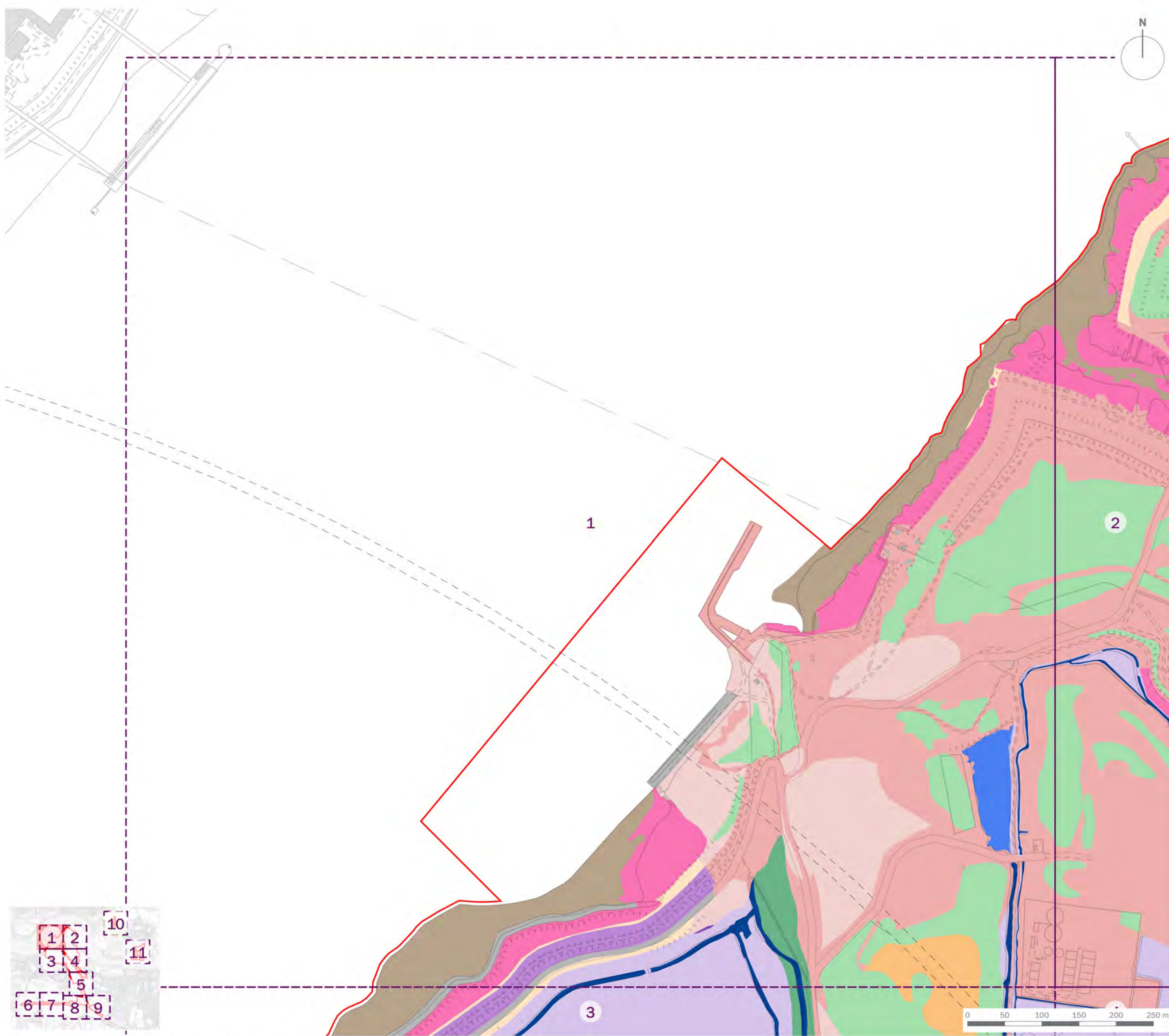
drawing title  
**Figure 12.42: Biodiversity Net Gain Assessment - Existing Habitats (Overview)**

date **17 DECEMBER 2020** drawn by **GY**  
drawing number **edp5988\_d147b** checked **WC**  
scale **1:25,000 @ A3** QA **JTF**



Registered office: 01285 740427 - www.edp-uk.co.uk - info@edp-uk.co.uk





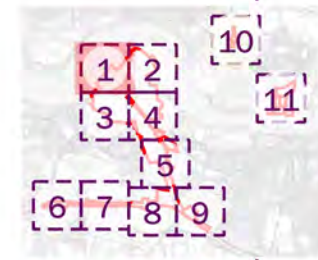
- Order Limits
- Mixed Scrub (Moderate) (36.46ha)
- Mixed Scrub (Fairly Poor) (25.87ha)
- Modified Grassland (Moderate) (32.78ha)
- Modified Grassland (Fairly Poor) (9.48ha)
- Lowland Calcareous Grassland (Moderate) (0.15ha)
- Other Neutral Grassland (Moderate) (1.59ha)
- Reedbeds (21.26ha)
- Saltmarshes and Saline Reedbeds (8.20ha)
- Intertidal Sediment - Littoral Mud (9.60ha)
- Ponds (Non-Priority Habitat) (1.57ha)
- Ditches (1.84ha)
- Open Mosaic Habitats on Previously Developed Land (Good) (15.42ha)
- Open Mosaic Habitats on Previously Developed Land (Moderate) (51.71ha)
- Developed Land; Sealed Surface (101.55ha)

client  
**London Resort Company Holdings Limited**

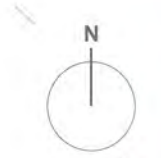
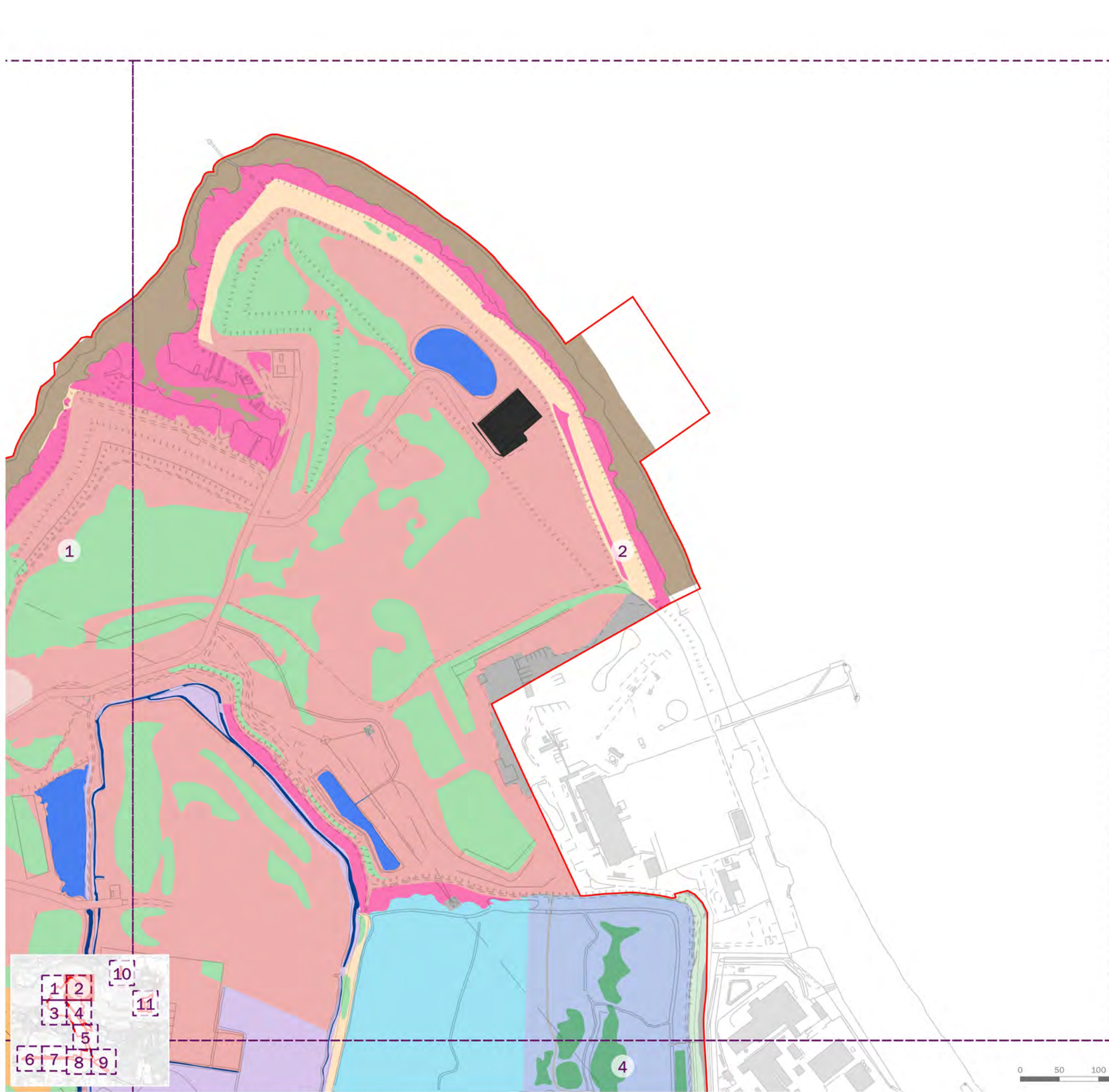
project title  
**The London Resort**

drawing title  
**Figure 12.42: Biodiversity Net Gain Assessment - Existing Habitats (Sheet 1 of 11)**

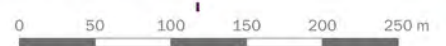
date	<b>17 DECEMBER 2020</b>	drawn by	<b>GY</b>
drawing number	<b>edp5988_d147b</b>	checked	<b>WC</b>
scale	<b>1:5,000 @ A3</b>	QA	<b>JTF</b>







- Order Limits
- Mixed Scrub (Moderate) (36.46ha)
- Mixed Scrub (Fairly Poor) (25.87ha)
- Mixed Scrub (Poor) (16.82ha)
- Modified Grassland (Moderate) (32.78ha)
- Modified Grassland (Fairly Poor) (9.48ha)
- Reedbeds (21.26ha)
- Saltmarshes and Saline Reedbeds (8.20ha)
- Intertidal Sediment - Littoral Mud (9.60ha)
- Floodplain Wetland Mosaic (CFGM) (Moderate) (14.65ha)
- Floodplain Wetland Mosaic (CFGM) (Fairly Poor) (11.95ha)
- Ponds (Priority Habitat) (2.67ha)
- Ponds (Non-Priority Habitat) (1.57ha)
- Ditches (1.84ha)
- Open Mosaic Habitats on Previously Developed Land (Good) (15.42ha)
- Open Mosaic Habitats on Previously Developed Land (Moderate) (51.71ha)
- Vacant/Derelict Land/Bareground (0.62ha)
- Developed Land; Sealed Surface (101.55ha)



client  
**London Resort Company Holdings Limited**

project title  
**The London Resort**

drawing title  
**Figure 12.42: Biodiversity Net Gain Assessment - Existing Habitats (Sheet 2 of 11)**

date	<b>17 DECEMBER 2020</b>	drawn by	<b>GY</b>
drawing number	<b>edp5988_d147b</b>	checked	<b>WC</b>
scale	<b>1:5,000 @ A3</b>	QA	<b>JTF</b>



Registered office: 01285 740427 - www.edp-uk.co.uk - info@edp-uk.co.uk





- Order Limits
- Lowland Mixed Deciduous Woodland (21.78ha)
- Other Woodland; Broadleaved (3.91ha)
- Mixed Scrub (Moderate) (36.46ha)
- Mixed Scrub (Fairly Poor) (25.87ha)
- Mixed Scrub (Poor) (16.82ha)
- Modified Grassland (Moderate) (32.78ha)
- Modified Grassland (Fairly Poor) (9.48ha)
- Other Neutral Grassland (Moderate) (1.59ha)
- Reedbeds (21.26ha)
- Saltmarshes and Saline Reedbeds (8.20ha)
- Intertidal Sediment - Littoral Mud (9.60ha)
- Ponds (Priority Habitat) (2.67ha)
- Ditches (1.84ha)
- Open Mosaic Habitats on Previously Developed Land (Good) (15.42ha)
- Open Mosaic Habitats on Previously Developed Land (Moderate) (51.71ha)
- Developed Land; Sealed Surface (101.55ha)

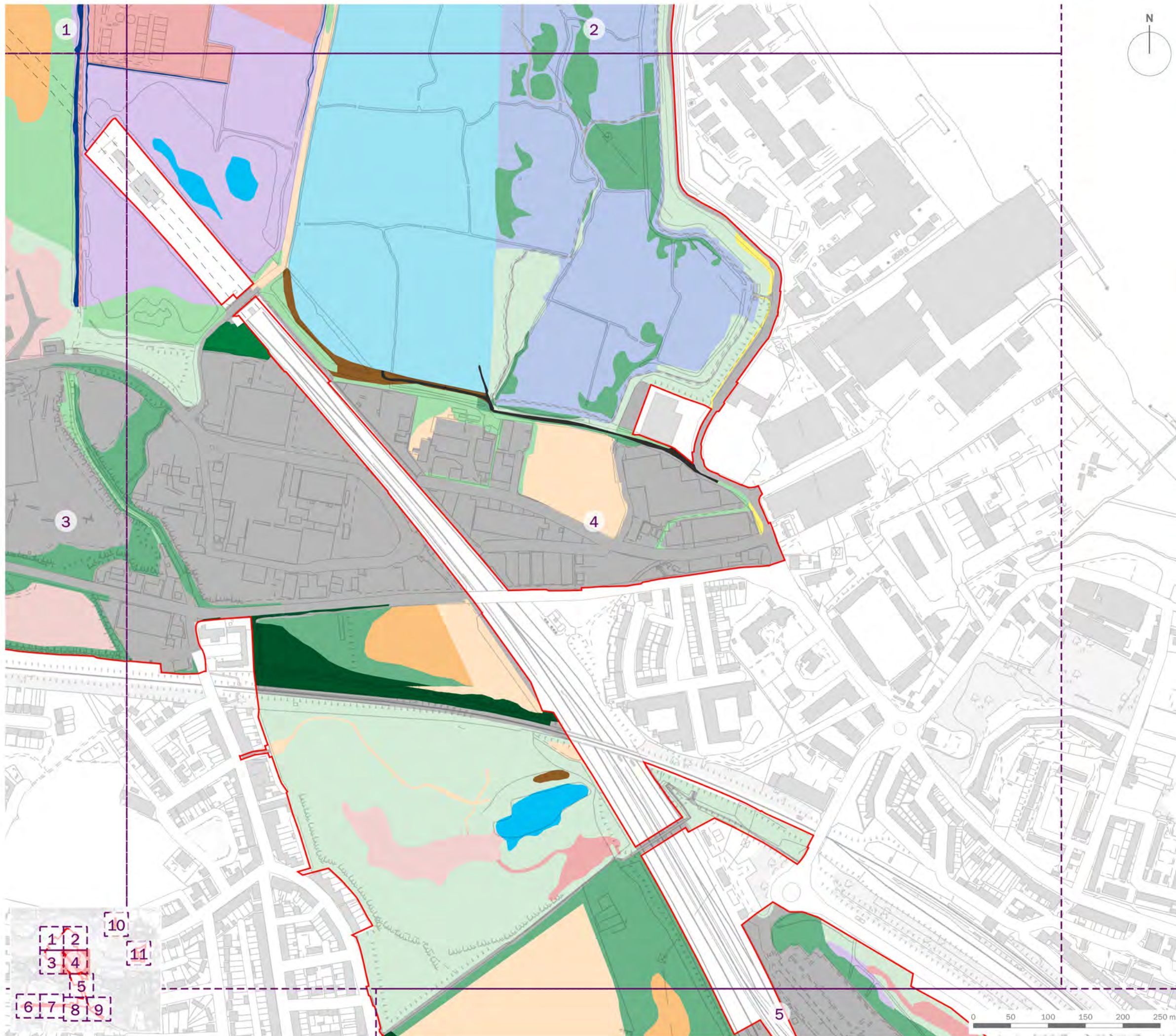
client  
**London Resort Company Holdings Limited**

project title  
**The London Resort**

drawing title  
**Figure 12.42: Biodiversity Net Gain Assessment - Existing Habitats (Sheet 3 of 11)**

date	<b>17 DECEMBER 2020</b>	drawn by	<b>GY</b>
drawing number	<b>edp5988_d147b</b>	checked	<b>WC</b>
scale	<b>1:5,000 @ A3</b>	QA	<b>JTF</b>





- Order Limits
- Lowland Mixed Deciduous Woodland (21.78ha)
- Other Woodland; Broadleaved (3.91ha)
- Mixed Scrub (Moderate) (36.46ha)
- Mixed Scrub (Fairly Poor) (25.87ha)
- Mixed Scrub (Poor) (16.82ha)
- Modified Grassland (Moderate) (32.78ha)
- Modified Grassland (Fairly Poor) (9.48ha)
- Amenity (4.00ha)
- Ruderal/Ephemeral (0.44ha)
- Reedbeds (21.26ha)
- Floodplain Wetland Mosaic (CFGM) (Moderate) (14.65ha)
- Floodplain Wetland Mosaic (CFGM) (Fairly Poor) (11.95ha)
- Ponds (Priority Habitat) (2.67ha)
- Ditches (1.84ha)
- Open Mosaic Habitats on Previously Developed Land (Good) (15.42ha)
- Open Mosaic Habitats on Previously Developed Land (Moderate) (51.71ha)
- Vacant/Derelict Land/Bareground (0.62ha)
- Developed Land; Sealed Surface (101.55ha)

client  
**London Resort Company Holdings Limited**

project title  
**The London Resort**

drawing title  
**Figure 12.42: Biodiversity Net Gain Assessment - Existing Habitats (Sheet 4 of 11)**

date	<b>17 DECEMBER 2020</b>	drawn by	<b>GY</b>
drawing number	<b>edp5988_d147b</b>	checked	<b>WC</b>
scale	<b>1:5,000 @ A3</b>	QA	<b>JTF</b>



Registered office: 01285 740427 - www.edp-uk.co.uk - info@edp-uk.co.uk





- Order Limits
- Lowland Mixed Deciduous Woodland (21.78ha)
- Other Woodland; Broadleaved (3.91ha)
- Mixed Scrub (Moderate) (36.46ha)
- Mixed Scrub (Fairly Poor) (25.87ha)
- Mixed Scrub (Poor) (16.82ha)
- Modified Grassland (Moderate) (32.78ha)
- Modified Grassland (Fairly Poor) (9.48ha)
- Amenity (4.00ha)
- Reedbeds (21.26ha)
- Saltmarshes and Saline Reedbeds (8.20ha)
- Ponds (Priority Habitat) (2.67ha)
- Open Mosaic Habitats on Previously Developed Land (Good) (15.42ha)
- Open Mosaic Habitats on Previously Developed Land (Moderate) (51.71ha)
- Developed Land; Sealed Surface (101.55ha)

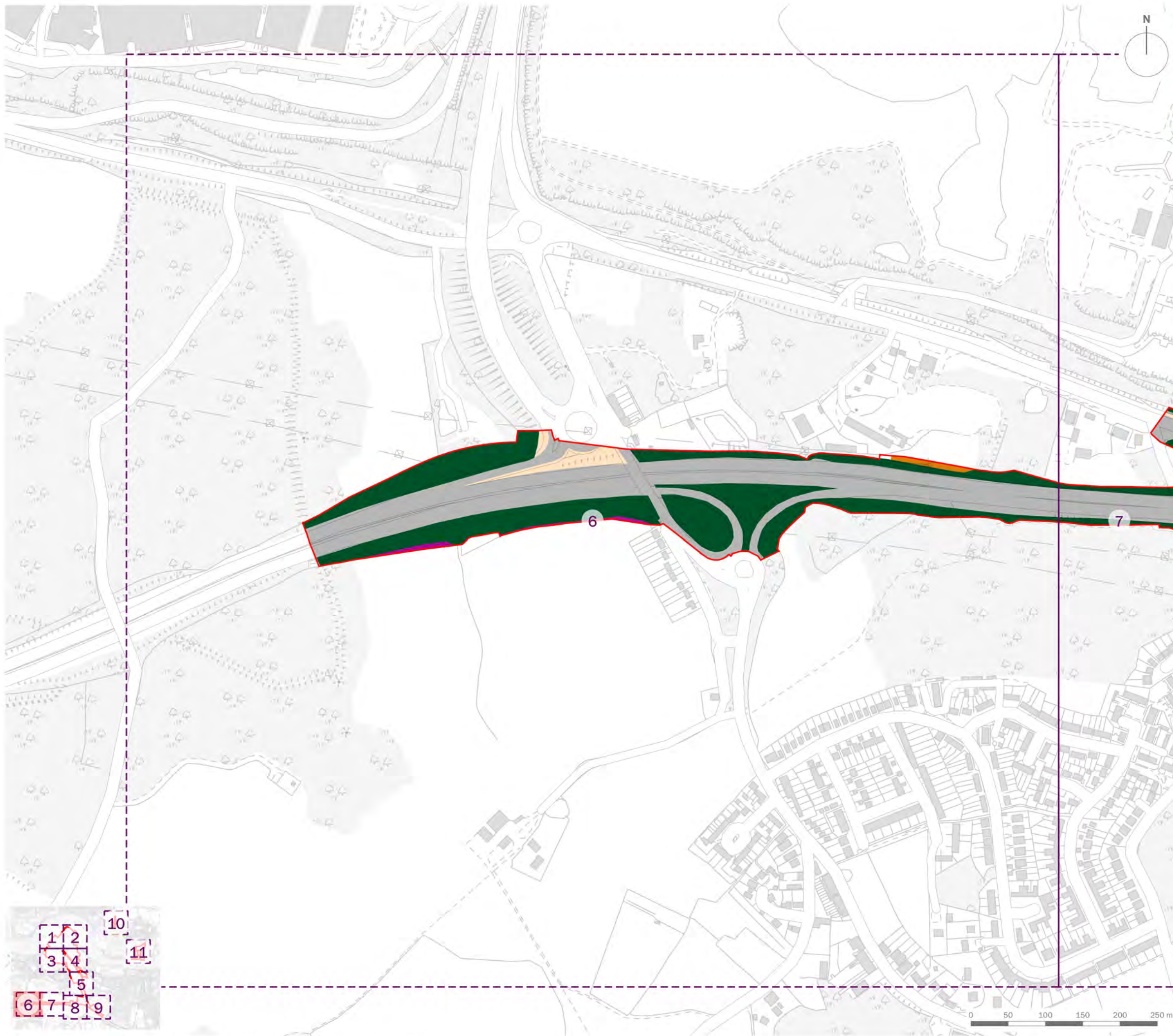
client  
**London Resort Company Holdings Limited**

project title  
**The London Resort**

drawing title  
**Figure 12.42: Biodiversity Net Gain Assessment - Existing Habitats (Sheet 5 of 11)**

date	<b>17 DECEMBER 2020</b>	drawn by	<b>GY</b>
drawing number	<b>edp5988_d147b</b>	checked	<b>WC</b>
scale	<b>1:5,000 @ A3</b>	QA	<b>JTF</b>





- Order Limits
- Lowland Mixed Deciduous Woodland (21.78ha)
- Modified Grassland (Moderate) (32.78ha)
- Modified Grassland (Poor) (0.45ha)
- Cereal Crop (0.16ha)
- Developed Land; Sealed Surface (101.55ha)

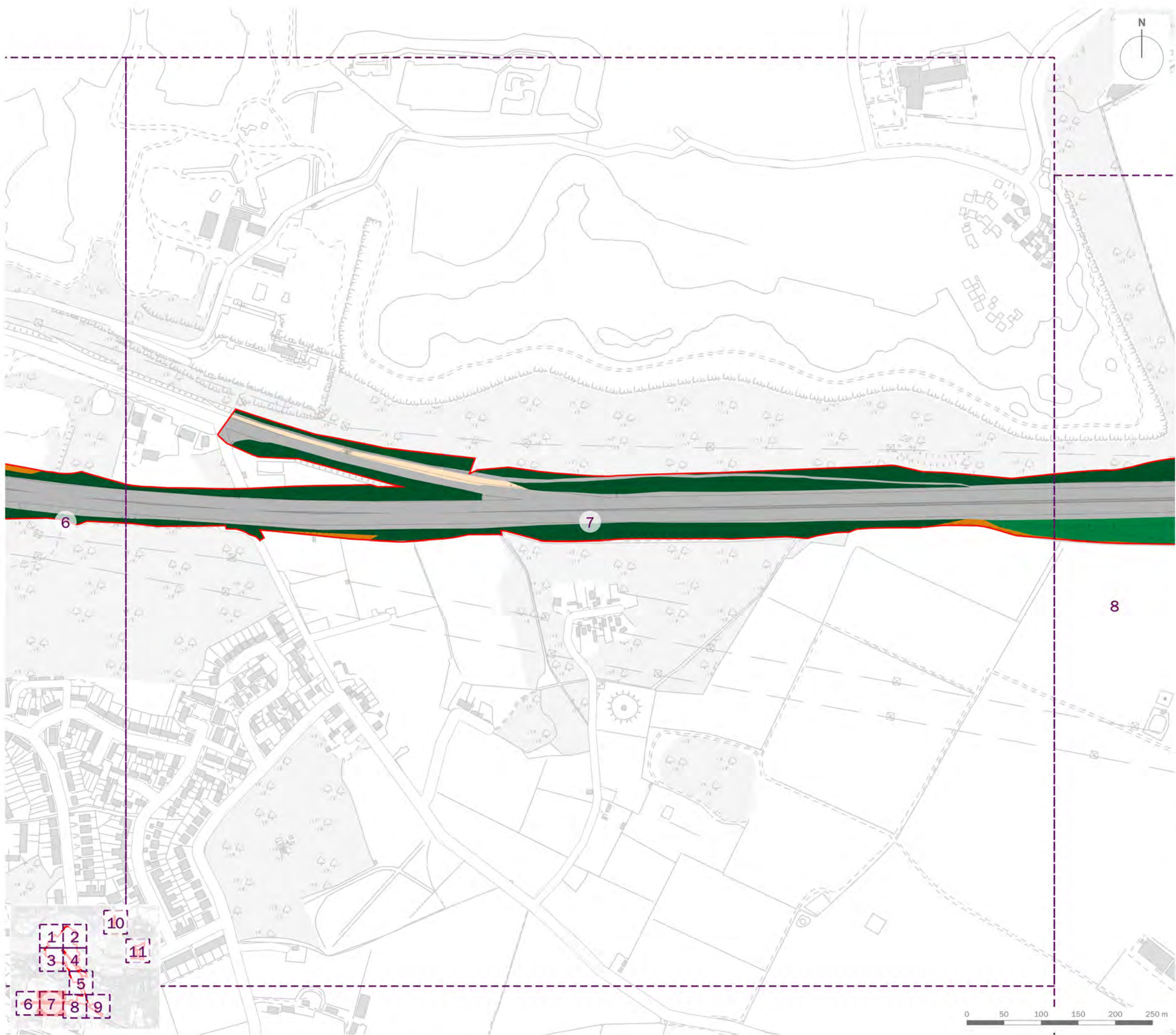
client  
**London Resort Company Holdings Limited**

project title  
**The London Resort**

drawing title  
**Figure 12.42: Biodiversity Net Gain Assessment - Existing Habitats (Sheet 6 of 11)**

date	<b>17 DECEMBER 2020</b>	drawn by	<b>GY</b>
drawing number	<b>edp5988_d147b</b>	checked	<b>WC</b>
scale	<b>1:5,000 @ A3</b>	QA	<b>JTF</b>





- Order Limits
- Lowland Mixed Deciduous Woodland (21.78ha)
- Other Woodland; Broadleaved (3.91ha)
- Modified Grassland (Moderate) (32.78ha)
- Modified Grassland (Poor) (0.45ha)
- Developed Land; Sealed Surface (101.55ha)

client  
**London Resort Company Holdings Limited**

project title  
**The London Resort**

drawing title  
**Figure 12.42: Biodiversity Net Gain Assessment - Existing Habitats (Sheet 7 of 11)**

date	<b>17 DECEMBER 2020</b>	drawn by	<b>GY</b>
drawing number	<b>edp5988_d147b</b>	checked	<b>WC</b>
scale	<b>1:5,000 @ A3</b>	QA	<b>JTF</b>



Registered office: 01285 740427 · www.edp-uk.co.uk · info@edp-uk.co.uk





- Order Limits
- Lowland Mixed Deciduous Woodland (21.78ha)
- Other Woodland; Broadleaved (3.91ha)
- Mixed Scrub (Moderate) (36.46ha)
- Modified Grassland (Moderate) (32.78ha)
- Modified Grassland (Fairly Poor) (9.48ha)
- Modified Grassland (Poor) (0.45ha)
- Cereal Crop (0.16ha)
- Amenity (4.00ha)
- Reedbeds (21.26ha)
- Developed Land; Sealed Surface (101.55ha)

client  
**London Resort Company Holdings Limited**

project title  
**The London Resort**

drawing title  
**Figure 12.42: Biodiversity Net Gain Assessment - Existing Habitats (Sheet 8 of 11)**

date	<b>17 DECEMBER 2020</b>	drawn by	<b>GY</b>
drawing number	<b>edp5988_d147b</b>	checked	<b>WC</b>
scale	<b>1:5,000 @ A3</b>	QA	<b>JTF</b>





- Order Limits
- Lowland Mixed Deciduous Woodland (21.78ha)
- Other Woodland; Broadleaved (3.91ha)
- Mixed Scrub (Moderate) (36.46ha)
- Modified Grassland (Moderate) (32.78ha)
- Modified Grassland (Fairly Poor) (9.48ha)
- Modified Grassland (Poor) (0.45ha)
- Lowland Calcareous Grassland (Moderate) (0.15ha)
- Cereal Crop (0.16ha)
- Amenity (4.00ha)
- Reedbeds (21.26ha)
- Developed Land; Sealed Surface (101.55ha)

client  
**London Resort Company Holdings Limited**

project title  
**The London Resort**

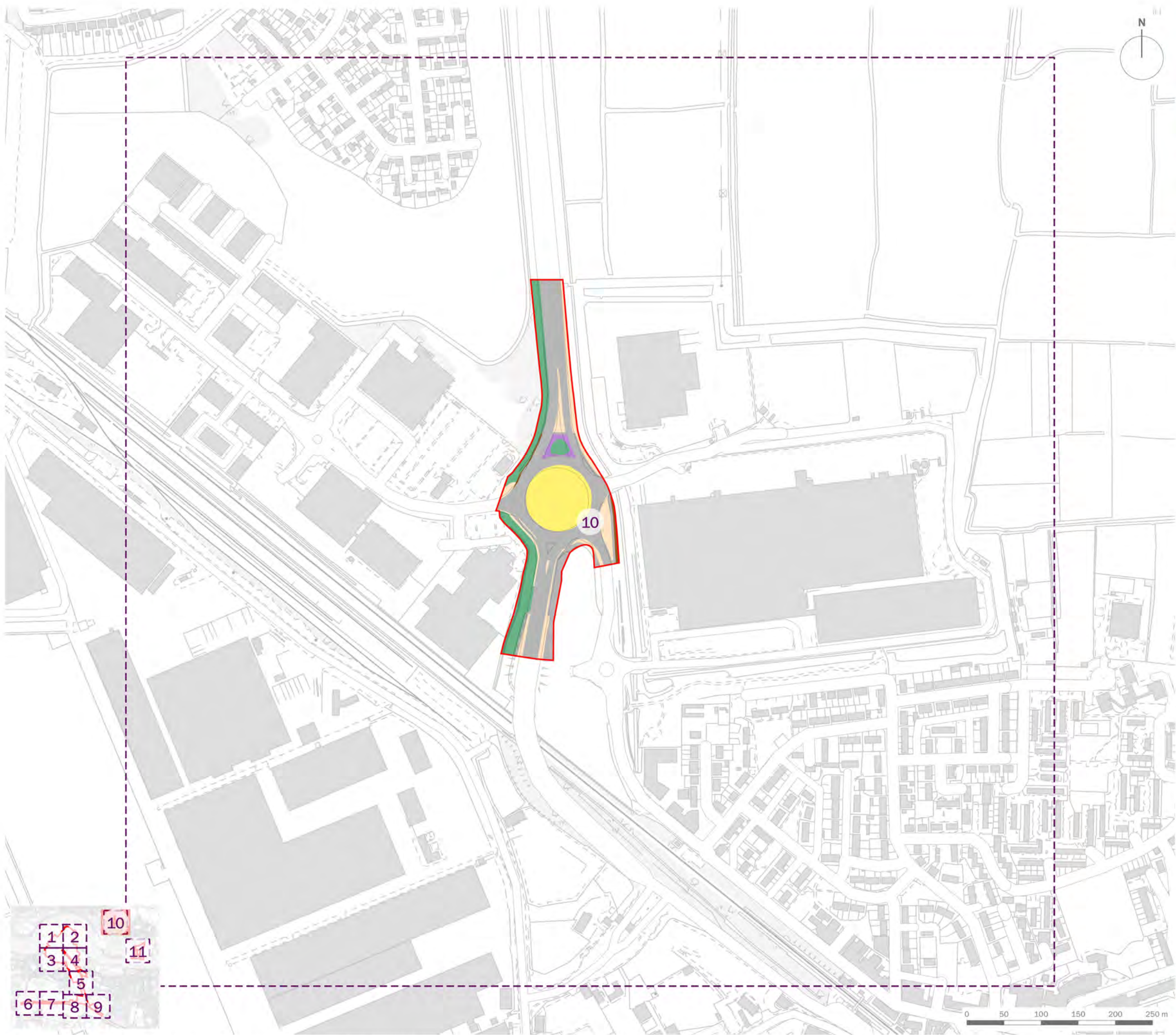
drawing title  
**Figure 12.42: Biodiversity Net Gain Assessment - Existing Habitats (Sheet 9 of 11)**

date	<b>17 DECEMBER 2020</b>	drawn by	<b>GY</b>
drawing number	<b>edp5988_d147b</b>	checked	<b>WC</b>
scale	<b>1:5,000 @ A3</b>	QA	<b>JTF</b>

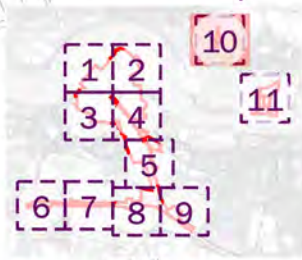


Registered office: 01285 740427 · www.edp-uk.co.uk · info@edp-uk.co.uk





- Order Limits
- Mixed Scrub (Moderate) (36.46ha)
- Modified Grassland (Moderate) (32.78ha)
- Other Neutral Grassland (Moderate) (1.59ha)
- Amenity (4.00ha)
- Ruderal/Ephemeral (0.44ha)
- Developed Land; Sealed Surface (101.55ha)



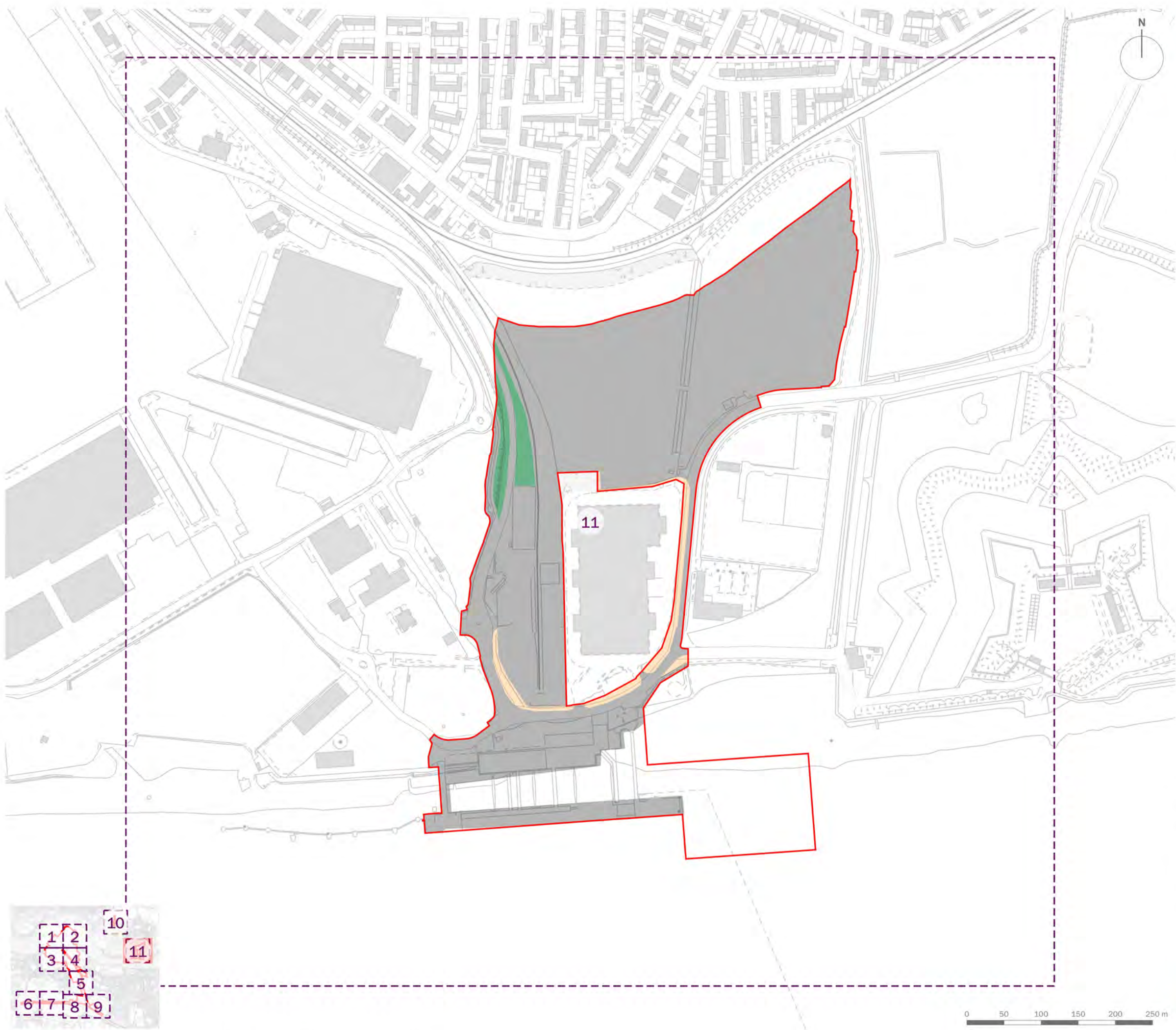
client  
**London Resort Company Holdings Limited**

project title  
**The London Resort**

drawing title  
**Figure 12.42: Biodiversity Net Gain Assessment - Existing Habitats (Sheet 10 of 11)**

date	<b>17 DECEMBER 2020</b>	drawn by	<b>GY</b>
drawing number	<b>edp5988_d147b</b>	checked	<b>WC</b>
scale	<b>1:5,000 @ A3</b>	QA	<b>JTF</b>





- Order Limits
- Mixed Scrub (Moderate)  
(36.46ha)
- Modified Grassland (Moderate)  
(32.78ha)
- Developed Land; Sealed Surface  
(101.55ha)

client  
**London Resort Company Holdings Limited**

project title  
**The London Resort**

drawing title  
**Figure 12.42: Biodiversity Net Gain Assessment - Existing Habitats (Sheet 11 of 11)**

date	<b>17 DECEMBER 2020</b>	drawn by	<b>GY</b>
drawing number	<b>edp5988_d147b</b>	checked	<b>WC</b>
scale	<b>1:5,000 @ A3</b>	QA	<b>JTF</b>



Registered office: 01285 740427 · www.edp-uk.co.uk · info@edp-uk.co.uk